



Basic Strut Brace - Installation Instructions

Part # 2040900
Fits 911/912/930 '66-'89

Parts list:

Qty	Description
1	Main brace assembly
2	10mm x 35mm socket cap screw
2	10mm Belleville washer

Introduction –

The basic strut brace is composed of a main brace assembly that ties the shock towers. The brace assembly is secured to the shock towers using a socket cap screw threaded into the camber plate.

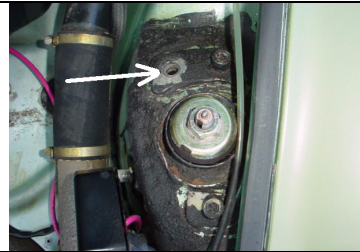
Each camber plate is secured using three socket cap screws. Be sure to loosen and remove only screws required for installation of the strut brace to avoid the need to perform an alignment.

The brace assembly is composed of an aluminum tube and rod-ends. The aluminum tube has complementing right and left hand threads that receive the rod-ends. Length and tension are adjusted by rotating the tube without removing the socket cap screws securing the rod-ends.

Note each rod-end has a red dot on one side. Orient all rod-ends so that the red dot faces up.

Step-by-Step Installation -

1 - Remove the center most socket cap screw from the rear of each camber plate.



2 – Using the 10 mm socket cap screws provided, loosely attach the brace assembly to the towers as shown. Use one Belleville lock washer beneath each socket cap screw. Orient rod-ends such that the red dot faces up.

It will be necessary to adjust the main brace assembly length. Make adjustment by loosening the jam nuts and rotating the aluminum tube to thread the rod-ends in or out as needed.



3 – Tighten all socket cap screws to 34 ft/lbs (8mm hex key).

4 – Adjust the brace assembly to place the towers in slight tension. With the jam nuts loosened, rotate the main brace assembly tube to find its neutral point (neither in tension or compression). Rotate the tube 1/3 turn to create slight tension then snug down the jam nuts.

If you want to introduce some added negative camber you can tighten the tube a bit further, pulling the towers together.



This page intentionally blank