

991 Front Camber Plate - Installation Instructions

Part #2152207 - Coilover struts

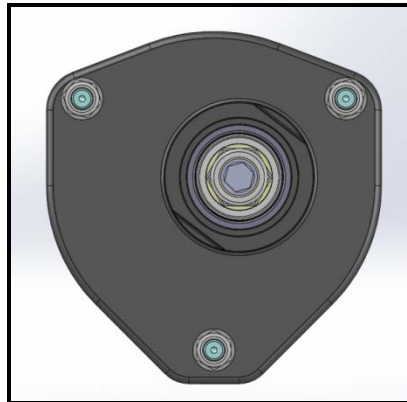
Part #2152211 - Stock and Lowering Springs

Cars applicable:

991 Carrera, 981 Boxster / Cayman,

Parts list:

Description	Quantity Included by Part Number	
	2152207	2152211
Front Camber Plate Assembly, Left	1	1
Front Camber Plate Assembly, Right	1	1
M8 Nylon Locking Nuts	6	6
M8 Washers	6	6
M14 Nylon Locking Nut	2	2
M14 Washer	2	2
"Stock" Spring Centering Rings	0	2
3" Seat Bearing Kit for use with "Stock" Springs	0	2
Upper Spring Perch for 2.25" Standard Spring	2	0
2.25" Spring Seat Bearing Kit	1	0
2.25" to 2.5" Spring Adapters	2	0



991 Front Right Camber Plate

Tools Required:

- Basic Mechanic's Tool set

Introduction:

Congratulations on your selection of the Elephant Racing 991 camber plate kit!

991 front camber plates allow for additional camber and castor over the factory range of adjustment, similar to the GT3 geometry. These camber plates fit original factory type struts, including those equipped with PASM.

These plates use high strength hardened steel spherical bearings and are direct replacements for the factory plates which use compliant rubber bushings. The teflon lined spherical bearings used in our kit are entirely maintenance free and require no supplemental lubrication. These plates are sealed to prevent contamination from water or grime, thus extending bearing life. This makes the Elephant Racing camber plate kit perfect for regular street use, as well as extended abuse on the race track.



Configurations:

This kit can be used in one of two configurations as listed below. Please follow the installation steps for your specific application:

1. Stock or "lowering" springs.
2. Coil-over conversion kits

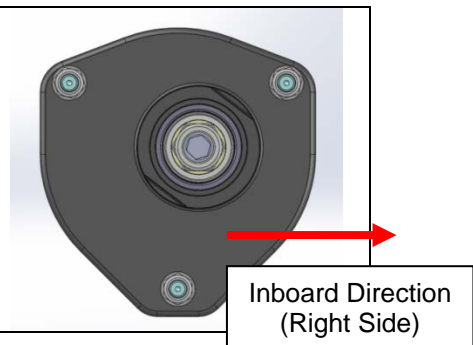
Step-by-Step Installation -

1 – Loosen the strut nut attaching the strut to the factory upper strut mount. Pull the strut away from the upper mount.



4 – Install Elephant Racing Camber Plates in the car. Ensure that the camber plates are installed on the correct side of the car. For maximum negative camber, the upper shock mounting point should be as far inboard as possible.

Note: Torque fasteners to the specifications as called out in the appropriate shop manual



5 – Stock and Lowering Springs (Kit 2152211)

Remove the factory upper strut mounts. Remove the bearing/upper spring perch from the factory upper strut mount.

Separate the upper perch and rubber seats from the bearing. The upper perches and seats will be reused.

Place the factory upper spring perch, 3" seat bearing kit and coil spring on the camber plate as shown to the right.

Coilovers (Kit 2152207)

Assemble the coilover assembly using the provided upper spring perch. Ensure the 2.25 inch seat bearing kit is installed between the upper spring perch and the 2.25" to 2.5" spring adaptor. Install the assembly onto the car per the appropriate shop manual.

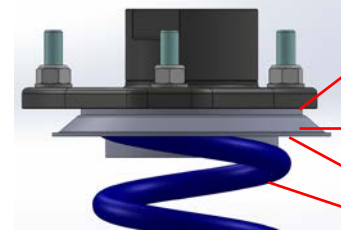


Factory Upper Spring Perch/Seat and Bearing

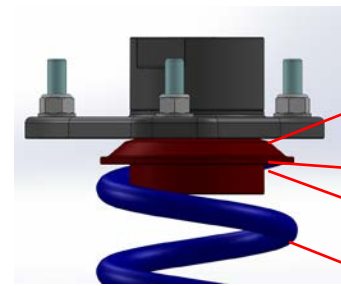


Factory Bearing

Factory Upper Spring Perch with Rubber Seat



Seat Bearing Kit
Factory Metal Spring Perch
Rubber Spring Seat
Spring

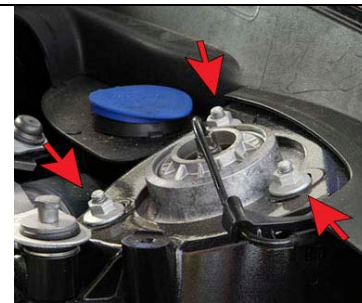


Elephant Racing Upper Spring Perch
Seat Bearing Kit
2.25" to 2.5" Adaptor
2.5" Spring

6 – Adjustment

Camber Adjustment is performed exactly the same as it would be using the factory upper strut mount.

- Loosen the three attachment nuts until the plate can slide freely
- Adjust to the desired location.
- Tighten the nuts per the shop manual specifications.





This page intentionally left blank