

991 Rear upper Shock Mount- Installation Instructions

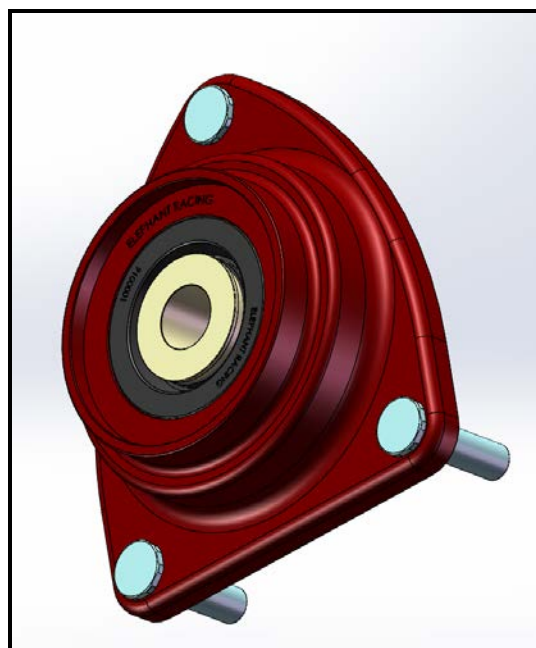
Part #2152208

Cars applicable:

991 based C2, C4, GT3, Turbo

Parts list:

Quantity	Description
2	Rear Upper Shock Mount assemblies
6	M8 Locking Nuts
6	M8 washers



991 Rear Upper Shock Mount

Tools Required:

- Basic Mechanic's Tool set

Introduction:

Congratulations on your selection of the Elephant Racing 991 rear upper shock mount kit! The Elephant Racing rear upper shock mounts for the 991 are compatible with either 2.25" or 2.5" standard springs, as well as stock or lowering springs.

These mounts use high strength hardened steel spherical bearings and are direct replacements for the factory plates which use compliant rubber bushings. The teflon lined spherical bearings used in our kit are entirely maintenance free and require no supplemental lubrication. These mounts also have seals installed in order to prevent contamination from water or grime, thus extending bearing life. This makes the Elephant Racing camber plate kit perfect for regular street use, as well as extended abuse on the race track.

Configurations:

This kit can be used in one of three configurations as listed below. Please follow the installation steps for your specific application:


1. Stock or "lowering" springs Elephant Racing upper shock mount
2. 2.5" springs without an upper perch
3. coilover setup with an upper perch

Step-by-Step Installation -

1 – Raise and support the vehicle using an appropriate method.
Remove the rear wheels.

2 – Remove the factory upper mount from the car. Refer to an appropriate shop manual for instructions.

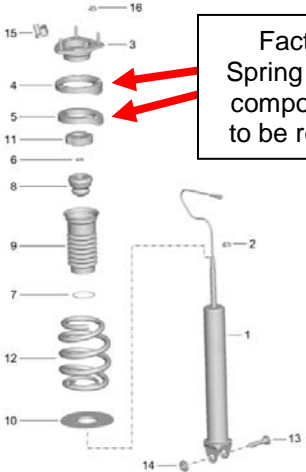
Install the Elephant Racing 991 rear upper shock mounts in the car.




3 – Follow the appropriate instructions below for your application.

Stock and Lowering Springs:

Remove the factory upper spring perch from the factory mount and place on the Elephant Racing upper mount.



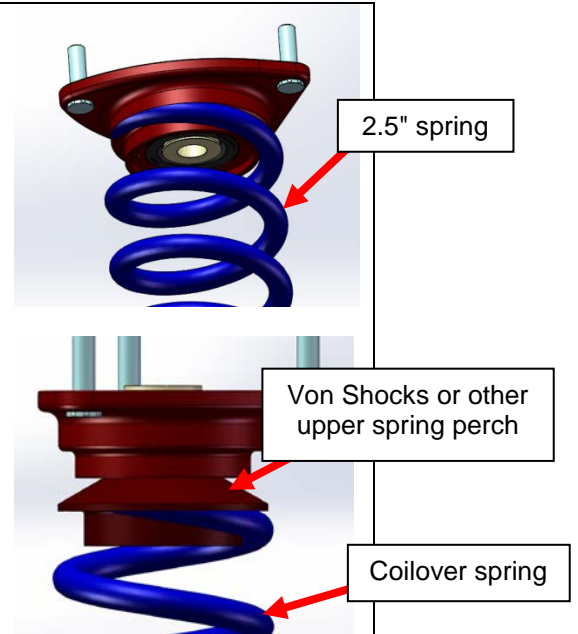
Factory Spring Perch components to be reused



Spring Perch on upper shock mount

2.5 inch springs without upper spring perch:

If installing a coilover setup without an upper spring perch, a 2.5" spring can be installed over the raised boss on the Elephant Racing upper shock mount. If a spring seat bearing kit (available separately and recommended) is used, it must be installed at the bottom of the main spring.



Coilover springs with upper spring perch:

If an upper spring perch is used, assemble the shock assembly as normal with the upper spring perch contacting the upper shock mount spacer.

4 – Assemble shock assembly with the chosen spring and install in the car. Torque all fasteners to the specs as called out in an appropriate shop manual.

5 – Install the wheels and lower the car. Test drive the car to ensure that everything is tight and working as expected.



This page intentionally left blank.