



Visit our website for more products and information [www.elephantracing.com](http://www.elephantracing.com)

## Rear Track Arm Monoball kit - Installation Instructions

Part # 2260002

### Cars applicable:

94-98 993

### Parts list:

Qty	Description
8	Track arm monoball cartridges
8	Beveled retaining ring



Rear Track Arm Monoball Kit with weather seals

### Introduction –

Monoball cartridges replace the rubber bushings of the rear suspension track arms.

The monoball cartridges have maintenance free PTFE linings and require no supplemental lubrication.

Do not install retaining ring backward – be sure to follow the instructions and properly orient the retaining ring with the red mark visible.

Failure to properly install cartridge or retaining rings will result in an unsafe condition.



### Step-by-Step Installation -

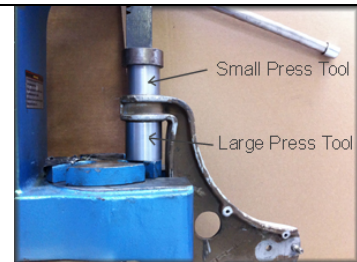
1 – Remove track arms and control arms from the car.

Refer to an appropriate shop manual.

2 – Remove the rubber bushings.

Use a shop press to remove the bushings. The factory rubber bushings have a metal outer casing pressed into the track arms/control arms. Use a shop press and pair of metal cylinders as press tools to apply pressure directly to the outer casing. Press the metal casings and bushings out.

Note the rear control arm has one rubber bushing and one spherical bearing. This kit replaces only the rubber bushing.



3 – Install monoball cartridges into track arms / control arms.

Use a cylindrical tool (socket works well) to focus the force of the press on the housing of the cartridge. Do not press the center bearing or it will be damaged.

Apply a bit of grease to the control arm bore and the cartridge housing. Press the cartridge into the control arm as shown. If the fit is very tight, the control arm end should be heated with boiling water (210°F). The heat will expand the arm and make it easier to press the cartridge into place. Torch-heating is not recommended, it may overheat and cause damage to the bearing once pressed in.

Press in the bearings.

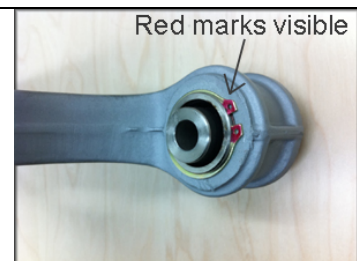


4 – Install the retaining rings.

Note the retaining rings have a slight bevel on one side only. This side is marked with red marks. The red side with bevel MUST face out such that the red marks are visible after installation.

The bevel tightens the retaining ring against the control arm face. If it is installed upside down, the ring will not tighten properly. Be sure to install the retaining ring properly.

Use proper snap ring pliers and avoid over-expansion of the retaining ring during installation. the play.



8 – Install control arms into car.



Visit our website for more products and information [www.elephantracing.com](http://www.elephantracing.com)