



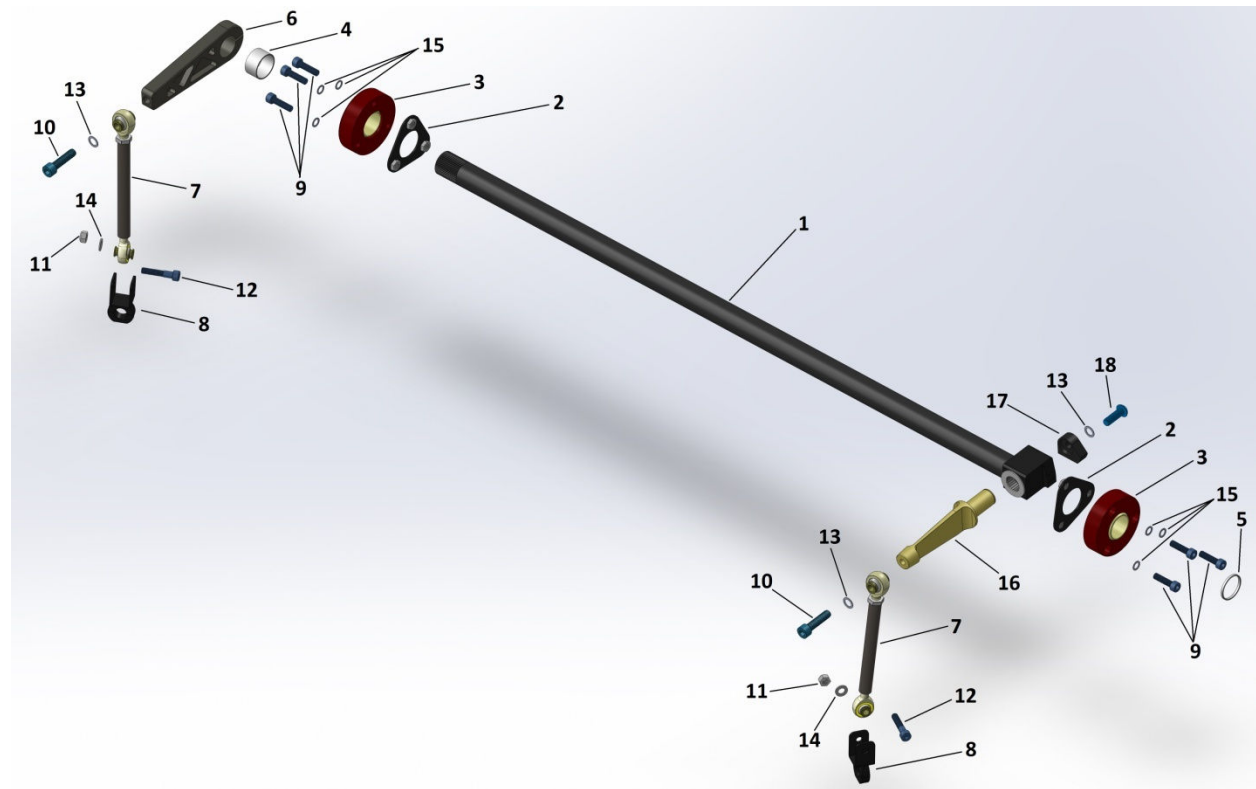
Manual Adjust Bladed Front Sway Bar - Installation Instructions

Part # 2270020 Medium
2270022 Firm

Cars applicable:
'65 -'89 911/930

Parts list:

Ref #	Qty.	Description	Ref #	Qty.	Description
1	1	Manual Adjustable Sway Bar	10	2	M10 x 40 Socket Cap Screw
2	2	Backing Plate	11	2	M8 Nylock Nut
3	2	Sway Bar Mounting Block	12	2	M8 x 40 Socket Cap Screw
4	1	Right Side Bar Spacer	13	3	M10 Schnorr Washer
5	1	Left Side Bar Spacer	14	2	M8 Flat Washer
6	1	Fixed Arm	15	6	M8 Schnorr Washer
7	2	Drop Link	16	1	Adjustable Blade
8	2	Drop Link Clevis	17	1	Blade Locking Block
9	6	M8 x 30 Socket Cap Screw	18	1	M8 x 20 Socket Cap Screw



Required But Not Included -

- Power Drill
- 1 1/2" (38mm) Hole Saw
- 11/32" (8.5mm) Drill Bit
- Center Punch

Introduction –

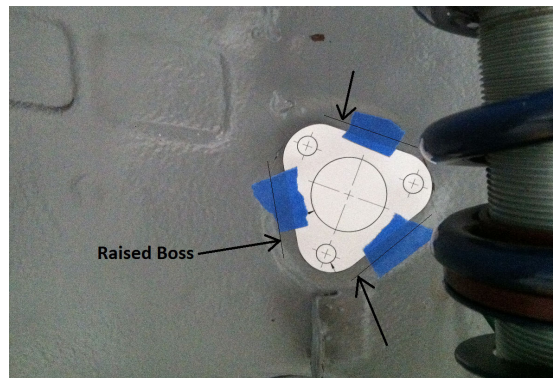
Sway bars are one of the essential tuning devices involved in a proper suspension setup. While many factory and aftermarket bars have multiple holes for adjustment, this causes undesirable transmission angles through the drop links. The result of this is non-linear roll stiffness adjustments and potentially unpredictable handling.

The proper solution for optimized geometry and predictable handling is the Elephant Racing's Manual Adjustable Bladed Sway Bar. This bar features a blade of fixed length which maintains proper force vectors at all times. The bladed design also offers unmatched resolution for roll stiffness adjustments. Along with these advantages is the reduced time for adjustment. The ER Bladed Sway Bar can be adjusted within minutes allowing for changes to be made without hesitation.



Cutting Chassis Through Holes -

1. Cut out Sway Bar Hole Templates. Look for triangular shaped raised boss in fender well and orient the template in the same way.
2. Tape template in position and mark the hole centers, then remove the template.
3. Drill the 1 1/2" (38mm) center hole first, re-check the positions of the holes, then proceed to cutting the other 3 holes with an 11/32" (8.5mm) drill bit.
4. Follow the same procedure for the second side



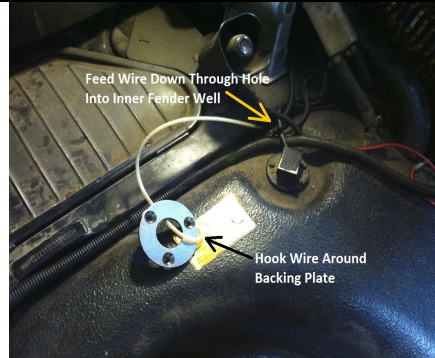
Installing Sway Bar Blocks -

5. It can be helpful to hook a wire around the backing plate and feed the other end down through the 1 1/2" (38mm) hole.

6. Pull the wire through the center of the Sway Bar Mounting Block until the backing plate is flush up against the trunk wall.

7. Un-hook the wire from the backing plate and thread in the M8 screws.

8. Fully Installed



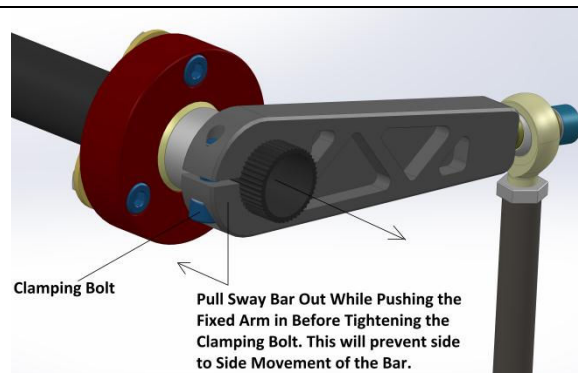
Installing the Sway Bar -

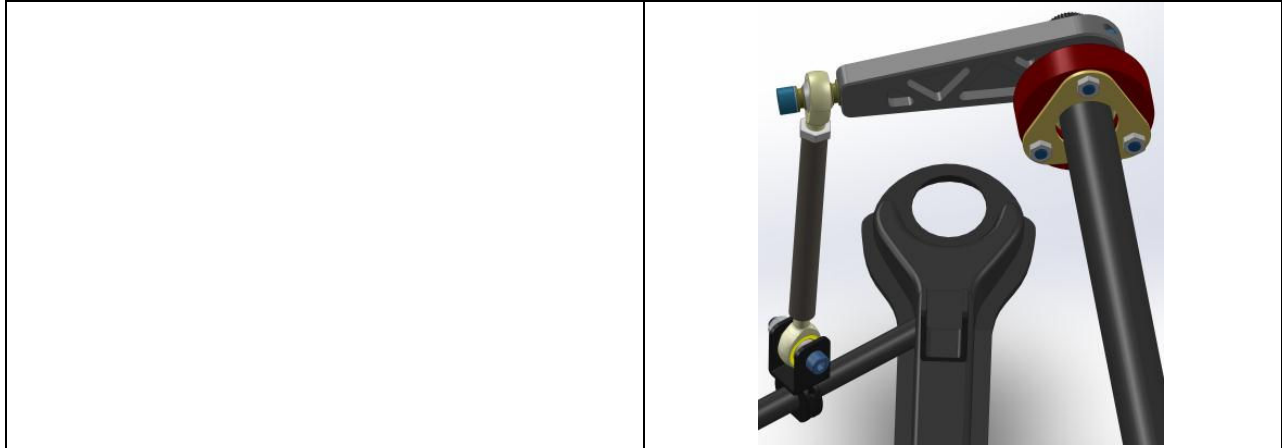
9. Slip the Left Side sleeve onto the bar, then proceed with pushing the bar through the left side block and on through the right side block.

10. Slide the fixed arm onto the end of the bar. Make sure that the arm is level with the blade on the opposing side of the bar.

11. To prevent side to side movement of the bar, make sure to push the fixed arm in before tightening the clamping bolt.

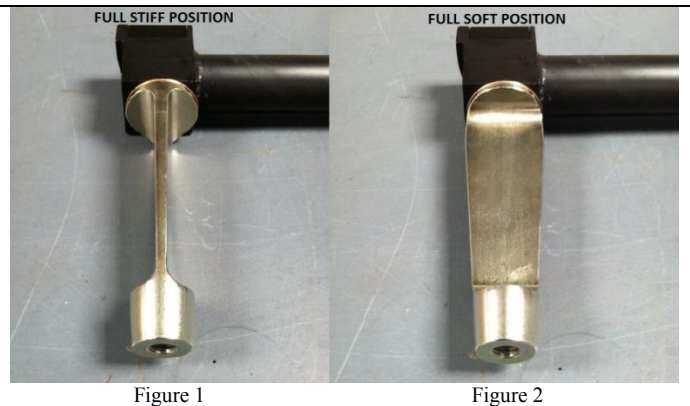
12. The drop link assembly should look like the image to the right.





Sway Bar Tuning

The performance of a bladed sway bar is entirely dependent on its position in relation to the force applied to it. Figure 1 shows the vertical position which is also the stiffest position. Similarly, Figure 2 shows the horizontal position which is the softest position. Every position along this 90 degree rotation gets progressively softer or more stiff depending on which position you are starting from.



Adjusting the Blade on the Vehicle

Beginning Note: There is NO need to jack up the vehicle or remove the wheels.

1. Turn the wheels to the Right (This provides access to the back of the blade assembly)
2. Loosen the Screw
3. Adjust the Blade (Rotate)
4. Tighten the Screw (20 lb-ft)

