

Solid Rear Sub-frame Bushing - Installation Instructions

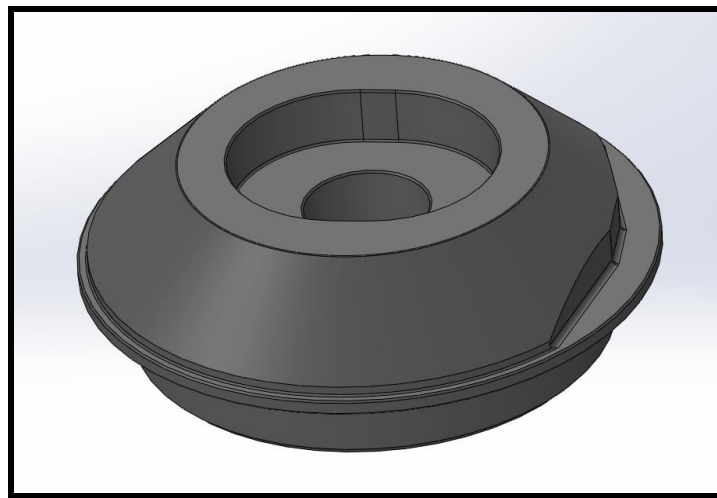
Part # 2290037

Cars applicable:

993 All

Parts list:

| Quantity | Description |
|----------|------------------------------|
| 8 | Rear Subframe Solid Bushings |
| 4 | M12x17mm spacers |



Tools Required:

- Basic Mechanic's Tool Set
- Air Chisel
- Adequately sized pry bar

Introduction:

Congratulations on your purchase of the 993 Solid Rear Subframe Bushings from Elephant Racing!

The factory rubber sub-frame bushings can flex under heavy load, leading to non-ideal dynamic alignment behavior. These solid metal bushings replace the compliant factory rubber bushings, thus providing more direct and consistent suspension response. This translates to more predictable chassis behavior and inspiring confidence as you dive into a corner.

All other things being equal, lowering the car changes the location of the roll center, and thus compromises the behavior of the suspension as intended from the factory. These solid bushings raise the sub-frame by 10 mm in the chassis to help compensate for a lowered vehicle.



Step-by-Step Installation -

1 – Raise the vehicle at the appropriate lifting locations as called out in an appropriate shop manual. Remove the rear wheels.

2 – Bushing Removal

Remove the sub-frames following the instructions from an appropriate shop manual.

Using an air chisel, bend the factory bushing insert flange up. Work around the bushing with the chisel, ensuring that the chisel is angled away from the sub-frame to prevent damage. Continue chiseling the bushing out until it is free from the sub-frame.

Use this same method to remove the other sub-frame bushings. A pry bar may be necessary to initially bend the bushing flange before using an air chisel to remove the bushing.

3 – Ensure the bores for the bushing inserts are clean and bur free. If necessary, use fine grit sand paper to smooth any rough edges created during the removal process.

4 – Bushing Installation

Install each half of the Elephant Racing Solid Bushing into the sub-frame bushing locations until fully seated. The new bushings are a close fit, but not an interference fit.

Use the M12x17mm spacers beneath the head of each bolt to prevent the threads from bottoming.

5 – If removed from the vehicle, re-install the rear sub-frames and associated components per an appropriate shop manual. Ensure all fasteners are torqued to the appropriate specification.

6 – Re-install the wheels and lower the car. Test drive the car to ensure all components are tight and working as intended.

7 – Since all suspension arms will have shifted during the removal and installation process, Elephant Racing recommends having an alignment of your vehicle performed by a certified professional.