



## Elephant Racing Hub Centric Wheel Spacers

Part #s 2380001, 2380002, 2380005, 2380107, 2380110, 2380115, 2380221

### Cars applicable:

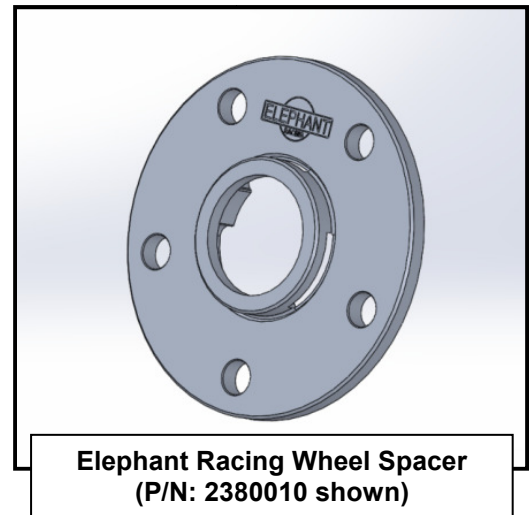
	Part Number						
	2380001 (1mm)	2380002 (2mm)	2380005 (5mm)	2380107 (7mm)	2380110 (10mm)	2380115 (15mm)	2380221 (21mm)
Applicable Vehicles	- 911/912 / - 930 - 964 - 993 - 996 / 997 - 991 - 914 (5 bolt) - 924 (5 bolt) - 928 - 944 - 951 - 959 - 968 - Boxster / Cayman - Cayenne - Panamera - Audi Q7 - VW - Touareg - Bentley - Mulsanne (2010+)	- 911/912 - 930 - 964 - 993 - 996 / 997 - 991 - 914 (5 bolt) - 924 (5 bolt) - 928 - 944 - 951 - 959 - 968 - Boxster / Cayman - Cayenne - Panamera - Audi Q7 - VW - Touareg - Bentley - Mulsanne (2010+)	- 911/912 - 930 - 964 - 993 - 996 / 997 - 991 - 914 (5 bolt) - 924 (5 bolt) - 928 - 944 - 951 - 959 - 968 - Boxster / Cayman - Cayenne - Panamera - Audi Q7 - VW - Touareg - Bentley - Mulsanne (2010+)	- 911/912 rear - 930 rear - 914 (5 bolt) rear - 993 - 996 / 997 - 991 - Boxster / Cayman - Cayenne - Panamera	- 911/912 rear - 930 rear - 914 (5 bolt) rear - 993 - 996 / 997 - 991 - Boxster / Cayman - Cayenne - Panamera	- 911/912 - 930 - 964 - 993 - 996 / 997 - 991 - 914 (5 bolt) - 924 (5 bolt) - 928 - 944 - 951 - 959 - 968 - Boxster / Cayman - Cayenne - Panamera - Audi Q7 - VW - Touareg - Bentley - Mulsanne (2010+)	- 911/912 - 930 - 964 - 993 - 996 / 997 - 991 - 914 (5 bolt) - 924 (5 bolt) - 928 - 944 - 951 - 959 - 968 - Boxster / Cayman - Cayenne - Panamera - Audi Q7 - VW - Touareg - Bentley - Mulsanne (2010+)

### Parts list:

Each kit contains two spacers of the applicable size.

### Tools Required:

- Vehicle jack
- Lug Wrench / Breaker bar / Impact Wrench
- Torque wrench and socket



### Introduction:

Congratulations on your purchase of Elephant Racing wheel spacers. Whether you are looking to achieve a more aggressive stance, or perhaps to be able to fit a wider tire under your fenders, Elephant Racing has a wide range of wheel spacers to fit your needs.

These spacers are intended to work with Porsche and select other vehicles that use a 5x130mm bolt pattern with a 71.6 mm center bore. When installing your wheel spacers, please take note of the instructions on the following page to ensure your spacers will work as intended.

### Installation

1 – Safely raise and support the vehicle at approved positions, and remove the wheels. Refer to an appropriate shop manual.

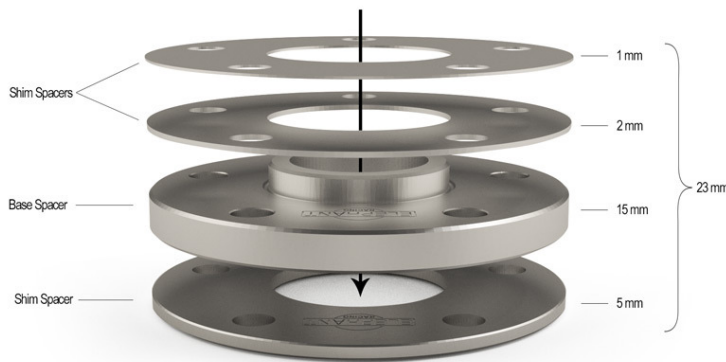
2 – Installation and spacer stacking

**P/N: 2380107, 2380110**

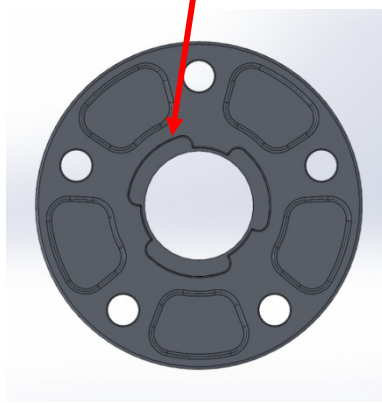
These spacers are clocked in order to properly engage the three protrusions on the factory hub. When installing, ensure the cutouts on the backside of the spacer are positioned to coincide with the hub protrusions as seen in the photo to the right. If the lug holes do not immediately align with hub threaded holes/studs, rotate the spacer to a new protrusion/cutout aligned position until the lug holes are aligned.

### Spacer Stacking

Starting with the chosen base spacer for your application, add shim spacers either behind or in front of the base spacer. Shim spacers up to 5mm behind and 6mm in front of the base spacer may be used for a total adjustment range of 11mm.



Spacer to be clocked to allow cutouts to be positioned over hub protrusions



3 – Wheel studs / bolts

The wheel bolts or studs chosen to be used with your wheel spacers must be long enough to ensure that at least 9 turns of the nut or bolt are completed before securing the wheel to the hub.

An approximate stud/bolt minimum length can be determined by the following:

$$\text{Stud or Bolt length (mm)} = \text{Existing stud or bolt length (mm)} + \text{Total wheel spacer height (mm)}$$

If required, extended wheel studs and bolts are available directly from Elephant Racing

4 – After installing the spacers, Re-install the wheels and safely lower the car. Torque the wheels to factory specifications.